

THE KULIN UPDATE

20 December 2024

6 MAIN ROADS

Main Roads will be completing the re surfacing on Johnston Street through Kulin.

8 COMMUNITY CHRISTMAS PARTY

Families, friends, partners and kids attended, it was great to see everyone taking a break and relaxing!

13 KULIN COMMUNITY HUB

We are excited to announce we are offering pool lunches!

COMMUNITY CHRISTMAS PARTY



Stella and I decided to squeeze one more edition of The Kulin Update into 2024! You will find information our local business hours over the Christmas and New Year Period, support services that can be accessed by you or someone you know that needs support and some updates from the Shire.

A reminder that there is an automatic Harvest and Vehicle Movement Ban imposed on Christmas Day (25th December 2024) and New Years Day (1st January 2025). If the conditions arise that a Harvest and Vehicle Movement Ban is required, this will be communicated via the Harvest Ban SMS and you can call the Harvest Ban Line - 08 9880 1511.

We will be celebrating Australia Day on 26th January 2025. Mark it in your calendars and more information will be communicated in January.

Wishing everyone a safe and happy Christmas and New Year.

Taryn Scadding

DEADLINES TO SUBMIT CONTENT FOR THE KULIN UPDATE

28th	January	2025
11th	February	2025
25th	February	2025
11th	March	2025
25th	March	2025
8th	April	2025
22nd	April	2025

DATES AND UPCOMING EVENTS

December

25th	Christmas Day
26th	Boxing Day
31st	New Years Eve

January

26th	Australia Day
------	---------------





All correspondence to be addressed to:
Chief Executive Officer
PO Box 125 KULIN WA 6365
p: 08 9880 1204 f: 08 9880 1221
e: enquiries@kulin.wa.gov.au
www.kulin.wa.gov.au

Shire of Kulin Notice of Annual Electors Meeting Tuesday 11 February 2025

In accordance with Regulation 5.29 (1) of the Local Government Act 1995, notice is given that the Shire of Kulin will hold the Annual Electors Meeting on Tuesday 11 February 2025, commencing at 5:30pm

This meeting will be held at the Shire of Kulin, Works Depot Crib Room, 91 Day Street, Kulin.

The purpose of the meeting is to discuss the Annual Report for 2023/24 and to deal with such other general business as allowed by the Presiding Officer, Shire President, Cr Grant Robins.

Note: Copies of the Annual Report for 2023/24 can be accessed via our website www.kulin.wa.gov.au or please contact the office if you require a hard copy.

All Electors are welcome to attend.

Alan Leeson
Chief Executive Officer

Macrocarpa Trail Walk/Bike Path

The Shire of Kulin are constructing a walk/bike path for residents and visitors to safely access the Macrocarpa Trail from the centre of town. The trail will link with our footpath network.

The trail has been pegged and we invite the community to walk the path and provide any feedback or concerns to the Shire of Kulin.

The path has been designed to ensure the least disturbance to the natural habitat and provide safe crossing at Short Street and on the Gorge Rock—Lake Grace Road. The path will be a compacted gravel footpath with asphalt aprons at appropriate crossovers.



Submissions regarding the Macrocarpa Trail Walk/Bike Path can be sent to:

Taryn Scadding

Executive Manager of Community Services

emcs@kuln.wa.gov.au

or dropped in to the Shire Administration Office.

Submissions will be accepted until 31st January 2025

THE KULIN UPDATE

— KULIN COMMUNITY RESOURCE CENTRE

ADVERTISEMENT BOOKING FORM 2025

Company/Organisation Name:

Address:

Email:

Contact Name:

Contact Number:

Title of Advert:

2025 Publication Information

Please cross next to your preferred publication dates

January		30th <input type="checkbox"/>	
February	13th <input type="checkbox"/>	27th <input type="checkbox"/>	
March	13th <input type="checkbox"/>	27th <input type="checkbox"/>	
April	10th <input type="checkbox"/>	24th <input type="checkbox"/>	
May	8th <input type="checkbox"/>	22nd <input type="checkbox"/>	
June	5th <input type="checkbox"/>	19th <input type="checkbox"/>	
July	3rd <input type="checkbox"/>	17th <input type="checkbox"/>	31st <input type="checkbox"/>
August	14th <input type="checkbox"/>	28th <input type="checkbox"/>	
September	11th <input type="checkbox"/>	25th <input type="checkbox"/>	
October	9th <input type="checkbox"/>	23rd <input type="checkbox"/>	
November	6th <input type="checkbox"/>	20th <input type="checkbox"/>	
December	4th <input type="checkbox"/>	18th <input type="checkbox"/>	

Submission Deadline:

4pm, Tuesday prior to publication

Sent to crccounter@kulin.wa.gov.au Send your advertisement in **PDF** or **PNG ONLY**.

DISCLAIMER:

The views expressed in the publications are not necessarily those of the editors who produce it. We reserve the right not to print articles deemed inappropriate.

Applicant Information:

We are not responsible for editing **ANY** articles or adverts sent it. The size of the advert you send will be the size you are charged for. How you send your advert is how it will be advertised, it is your responsibility to ensure the quality of your inclusion.

Advert size/cost

Please cross in boxes below. Not all electronic copies are in colour, only printed editions will be in b/w.

Quarter page b/w	<input type="checkbox"/>	\$20.00
Half page b/w	<input type="checkbox"/>	\$25.00
Half page colour	<input type="checkbox"/>	\$50.00
Full page b/w	<input type="checkbox"/>	\$40.00
Full page colour	<input type="checkbox"/>	\$80.00
Front or back page colour	<input type="checkbox"/>	\$100.00

Discounts are available

20% discounts for CRC member.
5% discount for publishing an advert for 0-6 months.
10% discount for publishing an advert for 6-12 months.

More Information

9880 1204 / crccounter@kulin.wa.gov.au
www.kulin.wa.gov.au



COMMUNITY NOTICES

Main Roads will be completing the re surfacing of Johnston Street through Kulin the 12th January to 15th January 2024.

This will involve traffic management and delays while works are being completed.

Work will be from southern edge of town through to the Kondinin-Kulin Road intersection.



CHRISTMAS COLOURING COMPETITION

Congratulations to the below winners!

Mae Bradford (4-7)

Flynn Smoker (8-11)

Zara Whitwell (12-16)



COUNCIL CHRISTMAS PARTY



COMMUNITY CHRISTMAS PARTY

On the 13th of December, we hosted the annual Community Christmas Party at the Freebairn Recreation Centre. The event commenced at 4:30pm which saw Excuse My French and Miss G's Catering food vans, Monster Ball blowup castles, live music, markets kids activities being held inside.

The evening started off quite warm. The kids face paint was off almost as fast as it was painted on! Thank

you to my amazing helpers, Lucy and Nadia, for helping set up the FRC and during the night! Very appreciated.

Families, friends, partners and kids attended, it was great to see everyone taking a break and relaxing! Once the night had cooled down the evening was perfect!

A big thank you goes out to Aitor and Iria for helping and working this event. They both helped me decorate

and organise the FRC. They also had the carpet set out on the courts for our stallholders. Which is not an easy job!

The great support from Lotterywest to fund the kids entertainment really did make the event. This allowed it to be free and had a positive impact on our numbers.

We can't wait to do it all again next year!

Stella Wade, CRC Trainee



COMMUNITY CHRISTMAS PARTY



SENIOR MOVIES 2025

February

FINDING NEVERLAND

July

CHITTY CHITTY BANG BANG

March

3 MEN AND A BABY

August

THE ADVENTURES OF ROBIN HOOD

April

PHILOMENA

September

OUR SOULS AT NIGHT

May

YESTERDAY

October

STILL MINE

June

STEEL MAGNOLIAS

November

LIKE FATHER

December

CHRISTMAS WITH THE KRANKS

DATES WILL BE AVAILABLE IN THE NEW YEAR



9880 1201

kulincommunityhub@yahoo.com



KULIN COMMUNITY HUB

"THANK YOU" NIGHT

FRIDAY 20TH DECEMBER

The Hub appreciates our customer's support!

All meals \$25.00

Kitchen opens at 6pm
{last orders 8:30pm}



We would love you to join us!



NEW YEARS EVE

KULIN COMMUNITY HUB

Join us for a casual meal in a relaxed atmosphere. You are welcome to book a table in advance.

Have a wonderful Christmas
and we hope to see you,
"seeing in" 2025!

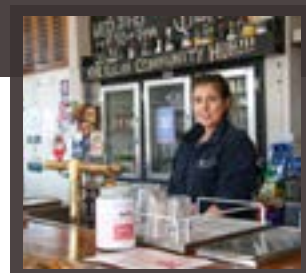
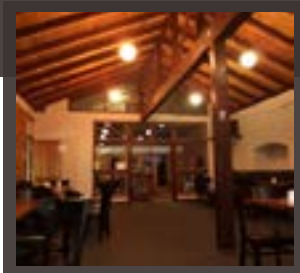
9880 1201 | kulincommunityhub@yahoo.com





KULIN COMMUNITY HUB

We are excited to offer pool
lunches this summer!



At the Hub we want to help make your experience at the Kulin Aquatic Centre as memorable as possible!

In 2025, we are offering take away lunches for travellers and pool visitors. Ring through your order and we will have it ready to collect daily from 12:30pm – 1:30pm.

The following food will be available

Box of chips	\$8.00
Nuggets and chips	\$15.00
Cheeseburger and chips	\$15.00
Hamburger and chips	\$22.00
Fish and chips	\$26.00

Phone 9880 1201

From 12.00pm to place your order



KULIN AQUATIC CENTRE CHRISTMAS CLOSURE

21.12	POOL 11AM - 6PM SLIDE 1 - 5PM
22.12	POOL 11AM - 6PM SLIDE 1 - 5PM
23.12	POOL ONLY 12PM - 6PM
24.12	CLOSED
25.12	CLOSED
26.12	CLOSED
27.12	POOL 12PM - 6.30PM SLIDE 1 - 5PM
28.12	POOL 11AM - 6PM SLIDE 1 - 5PM
29.24	POOL 11AM - 6PM SLIDE 1 - 5PM
30.24	CLOSED



KULIN AQUATIC CENTRE CHRISTMAS CLOSURE

31.12	POOL 12PM - 6.30PM
01.01	POOL 12PM - 6.30PM SLIDE 1 - 5PM
02.01	POOL 12PM - 6.30PM SLIDE 1 - 5PM
03.01	POOL 12PM - 6.30PM SLIDE 1 - 5PM
04.01	POOL 11AM - 6PM SLIDE 1 - 5PM
05.01	POOL 11AM - 6PM SLIDE 1 - 5PM
06.01	CLOSED
07.01	NORMAL HOURS RESUME FROM THIS DATE

KULIN SHIRE CHRISTMAS CLOSURE HOURS



Kulin Transfer Station

The Kulin Transfer Station is located on Truebody street approximately 2km from the Kulin Post Office.

The Station is open Sundays,
Mondays & Thursdays
from 10am – 3pm.

Driving Assessor

Kulin has one assessment day a month. Call BENDIGO BANK KULIN for bookings or enquiries
9880 1422

DIFIBRILLATOR LOCATIONS

KULIN

Kulin District High School
Kulin Caravan Park
Public Toilets (Johnston St)
Aquatic Centre
Freebairn Recreation Centre
Kulin IGA
Butler's Garage & Museum
Kulin Memorial Hall

DUDININ

Dudinin Tennis Club

PINGARING

Public Toilets
Pingaring AgSolutions
Pingaring Golf Club

CHRISTMAS CLOSURE HOURS



WE WILL BE
CLOSED
For the holidays!

CLOSED

20 DECEMBER 2024

REOPENING

13 JANUARY 2025

I WILL STILL BE AROUND IF THERE IS ANY
EMERGENCIES!

MERRY CHRISTMAS!

WE WILL BE
CLOSED

★ FOR THE ★
Holidays!

FROM 21ST DECEMBER UNTIL
TO 3RD FEBRUARY

acres
of
taste



Christmas / New Year Trading Hours

MONDAY 23rd December – 7:30am – 5:30pm

TUESDAY 24th December – 7:30am – 3:00pm

WEDNESDAY 25th December – CLOSED

THURSDAY 26th December – CLOSED

FRIDAY 27th December – ON CALL

SATURDAY 28th December – ON CALL

SUNDAY 29th December – CLOSED

MONDAY 30th December – 8:00am – 5:00pm

TUESDAY 31st December – 8:00am – 3:00pm

WEDNESDAY 1st January – CLOSED

THURSDAY 2nd January – 8:00am – 5:00pm

FRIDAY 3RD January – 8:00am – 5:00pm

SATURDAY 4th January – ON CALL



January Hours

During January we are reducing to shorter hours:

8:00am – 5:00pm

**Saturdays the office is closed but we are on call for
any urgent items or freight collections.**

Please call

Mike Robins: 0429 465 278

Troy Gangell: 0429 942 643

Fiona Jasper: 0414 589 747

We will resume normal business hours from

3rd February 2025

Christmas trading hours

Tuesday 24 December	9.30am to 4pm
Wednesday 25 December	Closed
Thursday 26 December	Closed
Friday 27 December	Closed
Saturday 28 December	Closed
Sunday 29 December	Closed
Monday 30 December	Closed
Tuesday 31 December	Closed
Wednesday 1 January	Closed
Thursday 2 January	9.30am to 4pm

bendigobank.com.au





KULIN COMMUNITY HUB

Christmas Open Hours

Monday 23 Dec	Open at 12pm
Tuesday 24 Dec	Open at 12pm
Wednesday 25 Dec	Closed
Thursday 26 Dec	Closed
Friday 27 Dec	Open at 12pm
Saturday 28 Dec	Open at 12pm
Sunday 29 Dec	Open at 12pm
Monday 30 Dec	Open at 12pm
Tuesday 31 Dec	Open at 12pm

Come and celebrate with us for dinner!

Lunch and dinner will be available daily

9880 1201

kulincommunityhub@yahoo.com



CHRISTMAS & NEW YEAR TRADING HOURS

Mon 23 December	8.00am - 5.00pm
Tue 24 December	8.00am - 5.00pm
Wed 25 December	CLOSED
Thu 26 December	CLOSED
Fri 27 December	8.00am - 5.00pm
Sat 28 December	8.00am - 11.30am
Sun 29 December	CLOSED
Mon 30 December	8.00am - 5.00pm
Tue 31 December	8.00am - 5.00pm
Wed 1 January	CLOSED
Thu 2 January	8.00am - 5.00pm
Fri 3 January	8.00am - 5.00pm



Kondinin Medical Centre Christmas Hours

There will not be NO Doctor attending between
23rd December 2024 to 3rd January 2025

Dr Alain Mackie
will be attending from
6th January to 17th January

Dr Vivienne Chukwuneke
will be back to normal hours
on the 20th January 2025

'Tis the *season* to be *asking* R U OK?™

The holiday season can be a difficult time for some people. You can make a difference at this time of year by checking in and having a meaningful conversation with the people in your world who:

- Are grieving
- Are missing friends or family
- Have had a tough year
- Are struggling financially
- Are affected by natural disasters
- Are working over the holidays
- Have challenging family relationships
- Are spending the holidays alone
- Feel excluded at this time
- Are feeling overwhelmed by world events



Here's some tips to help you connect and support your colleagues, friends and family:



- Think about who in your world might be finding this time difficult and ask them, 'are you OK?' or 'how are you doing?'
- Meet up for a chat over a cup or tea or coffee.
- If someone is grieving, ask them how they'd like to honour the memory of their loved one.
- Extend an invitation to someone who will be alone during the holiday period.
- Organise a picnic or activity to bring people together.
- Have a virtual catch up with someone you can't see in person or send a text message to let someone know you're thinking of them.
- Suggest a 'walk and talk' with someone you know who finds the holidays tough.
- Drop off a meal to someone to show them you care.
- Remind your friends that telephone support service Lifeline (13 11 14) are operating 24/7 over the holidays if they need extra support.

For more conversation tips visit ruok.org.au



Youth Support Services

Do you or someone you care about need someone to talk to?



Phone-based support:



Lifeline - 13 11 14

Beyond Blue - 1300 224 636

QLife - 1800 184 527

Kids Helpline - 1800 551 800

headspace - 1800 650 890

1800respect - 1800 737 732

13YARN - 13 92 76

Web-based support:



Beyond Blue - youthbeyondblue.com

Kids Helpline - kidshelpline.com.au

ehedspace - ehedspace.org.au

mindspot - mindspot.org.au

reachout - au.reachout.com

MOST - most.org.au

QLife - qlife.org.au



Water supply in a bushfire

This information could save your life



While leaving high-risk bushfires is the safest option, if you plan to stay and defend your home, you must have an **INDEPENDENT** water supply and pumping capability. This typically requires water tanks of at least 20,000 litres, pump and generator.

This is required as mains water supply and pressure cannot be guaranteed during a bushfire due to the risk of power cuts, fire damage and extreme demand.

Use the Department of Fire and Emergency Services resources to develop your personal bushfire plan: mybushfireplan.wa.gov.au

You can also download the My Bushfire Plan app via the App Store or Google Play to access your bushfire plan anytime - even without an internet connection.

To support bushfire plans, if you have groundwater bore access to surface water, you can take and store emergency water without it counting against your annual entitlement. For more information on this, and for the location of emergency bushfire water supplies in dryland agricultural areas, visit the Department of Water and Environmental Regulation website.

Drinking water

We recommend you keep a supply of drinking water on hand throughout summer in case your water supply is interrupted.

Assistance for customers affected by bushfire

After a bushfire, we can assist you with issues such as damaged water meters and payment difficulties. If you have been affected by bushfire please call us on **13 13 85**.

The Emergency WA website emergency.wa.gov.au provides emergency information and community safety warnings. Call **000** in a life-threatening emergency or the SES **132 500** for emergency assistance.



Kulin Aquatic Centre

Fees + Charges

Season pass (Pool only)

Child- \$55 (16 and under)

Adult- \$90

Family- \$165 (4 people)

Additional child \$55

Daily Entry

Child- \$2.50

(under 6 free)

Adult- \$4.50

Slide Pass- \$10

Spectators- \$2.50



Season pass (Pool + slide)

Child- \$115 (16 and under)

Adult- \$185

Family- \$320 (4 people)

Additional child \$115



Pool Contact Details:

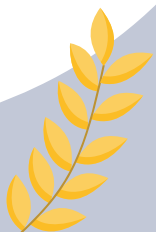
Pool Manager- Mark Gillbard

P: 9880 1222 E: pool@kulin.wa.gov.au



Transfer Station Closure

The transfer station hours over the Christmas break and through January will remain as normal except it will be closed on Boxing Day



SHIRE CONTACTS

FRC- 9880 1000

CRC- 9880 1204

Caravan Park-

0439 469 850

Pool- 9880 1222

Depot- 9880 1218

KCCC- 9880 1636

JUSTICES OF THE PEACE

MT Lucchesi 9880 4050

JM McInnes 9880 1360

R Noble 98801383

BW Sloggett 0427081925

MEDICAL CENTRE

Kulin- 9880 1315

Kondinin- 9889 1753

KN Hospital- 9894 1222

Nursing hours KU:

Tues & Wed 8:30 - 2:30

CHSP Co-ordinator

Thurs & Fri

EMERGENCY CONTACTS

Emergency centre-

9880 1079

SES - 13 25 00

Western Power- 13 13 53

Water Auth.- 13 13 75

Kulin Water Depot -

9880 1356

POLICE CONTACTS

Crime Stoppers-

1800 333 000

Kulin Police Station is staffed by two officers who are available to respond to incidents 24/7. Your local police can be contacted as follows:

Emergency: 000

Non-emergency: 131 444

KU Station - 9861 5800

TIP SHOP OPENING DAYS

10am-3pm

Sunday | Monday | Thursday

REPORTING MINOR ISSUES

The Shire of Kulin uses Snap Send Solve, simply download the app and use your smart phone to report a variety of issues directly to the Shire.

LOCAL CHURCHES

Uniting Church

1st & 3rd Sunday of each month, 10:30am

Catholic Church

Fr Truc Nguyen

1st, 3rd, 4th, 5th, 8am

Anglican Church

By request

K. Wilson 0429 801 228

Bunbury office- 9721 2100

KULIN MOTOR MUSEUM

Wednesday 10am-12:30pm

Saturday 10am-2pm

C. King 9880 1058

B. Colbourne 0429804615

J.Munro 0427 386 849

KULIN LIONS CLUB

Kulin Lions Club collect old glasses, hearing aids and stamps. Please feel free to drop off any of these items at the Kulin Post Office. Push bikes and batteries can be dropped off at Haydn's shed.

H McInnes 0429 801 215

T Barndon 0428 939 189

R Doust 0499 802 054

CONTAINERS FOR CHANGE

All Good Refund Depot come to Kulin on the last Wednesday of every month. They pick up returns from behind the Memorial Hall at midday. Contact Belle at the Shire for more info.

KCCC ID

C10351204

ARTS CENTRE ID

C10333381



Last Update Notice

Thank you to all our
readers and
advertisers in 2024.

As this is our last
edition for the year we
wish you a very Merry
Christmas and New
Year.

